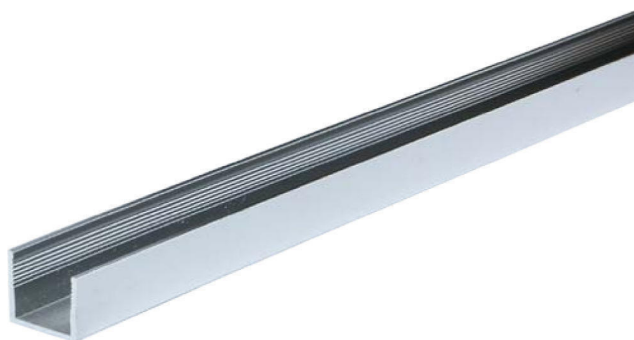


ALUMINIUM U-CHANNEL



MWO 580 U-CHANNEL

19mm Silver Anodized Aluminium

Dimensions:
Length: 2.9 metre
Thickness: 1.6mm
Width: 19mm x 19mm



MWO 590 U-CHANNEL

19mm Satin-finished Aluminium

Dimensions:
Length: 2.9/ 5.8 metre
Thickness: 1.7mm
Width: 19mm x 19mm



MWO 581 U-CHANNEL

25mm Satin-finished Aluminium

Dimensions:
Length: 2.9/ 5.8 metre
Thickness: 2.4mm
Width: 25mm x 25mm



MWO 591 U-CHANNEL

25mm Satin-finished Aluminium

Dimensions:
Length: 2.9/ 5.8 metre
Thickness: 2.4mm
Width: 25mm x 38mm



MWO 601 U-CHANNEL

38mm Satin-finished Aluminium

Dimensions
Length: 2.9 metre
Thickness: 2.7mm
Width: 38mm x 100mm



MWO 603 U-CHANNEL

25mm Satin-finished Aluminium

Dimensions
Length: 5.8 metre
Thickness: 2.4mm
Width: 25mm x 50mm